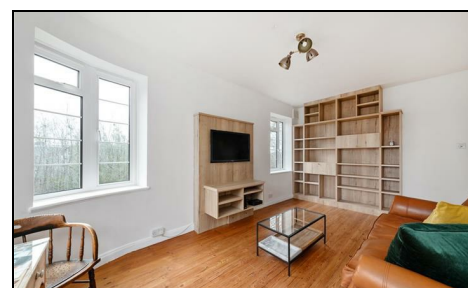


**Wyke Road
Raynes Park, SW20 8RR**

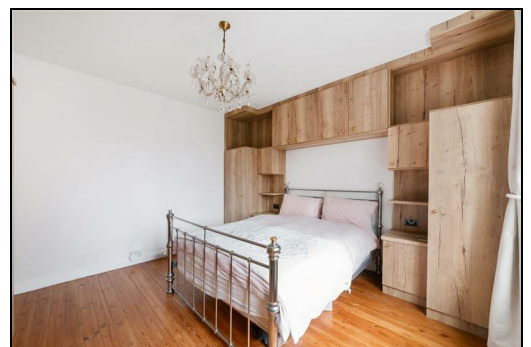
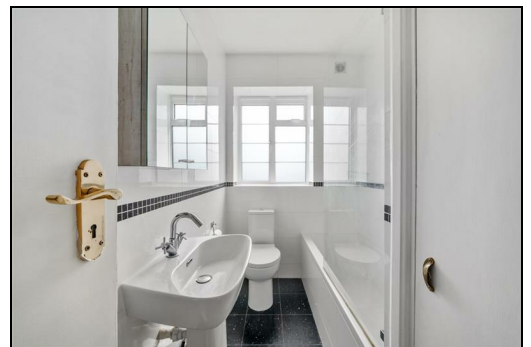
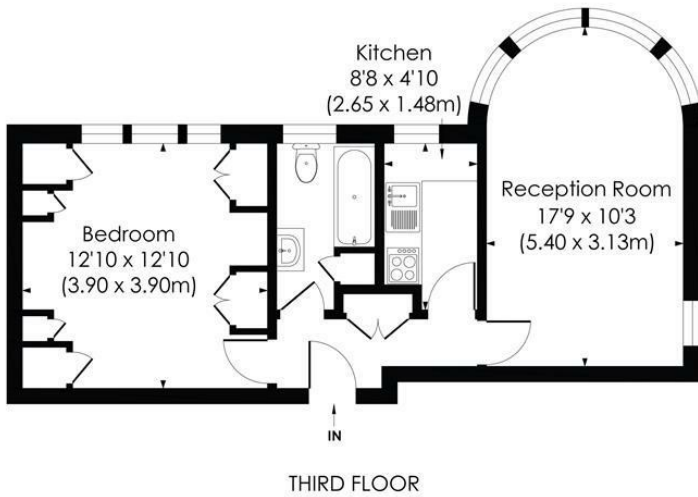
£300,000 Leasehold



This spacious 475 sqft, one bedroom third floor apartment is located only 0.2 miles to Raynes Park high street and station. Located in a popular Art Deco mansion block, this apartment comprises one double bedroom, reception room, modern kitchen and bathroom and has a long lease of 992 years remaining. This is a great first time purchase or buy to let opportunity. Offered to the market with NO ONWARD CHAIN.

WYKE ROAD, SW20

Approx. Gross Internal Floor Area
475 Sq. ft/44.09 Sq. m

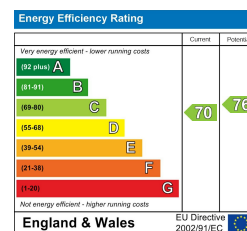


© Pixangle Property Marketing Ltd. info@pixangle.com Tel: 0208 870 2118



This floor plan has been prepared for the purpose of illustration only in accordance with the latest RICS code of measuring practice and is not to scale. All measurements and areas are approximate and whilst every effort has been made to ensure the accuracy of the plan contained here, no responsibility is taken for any error, omission or misstatement.

- One Double Bedroom
- Third Floor With Lift Access
- Art Deco Apartment
- Modern Kitchen & Bathroom
- 0.2 Miles To Raynes Park
- Wooden Floors Throughout
- No Onward Chain
- Lease Remaining: 992 Years
- EPC - C
- Council Tax Band - B



For Free Mortgage Quote and Best Mortgage Rates, call Ellisons Mortgage Advisor on 0208 944 9595



Although these particulars are believed to be correct, their accuracy is not guaranteed and they do not form part of any contract.

Celebrating 30 years of successful Sales and Lettings in Merton

